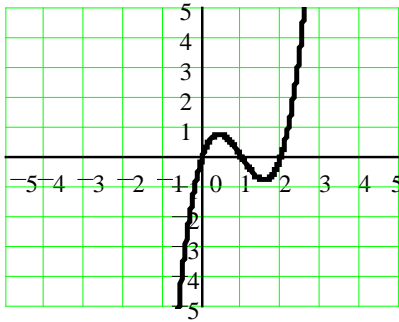


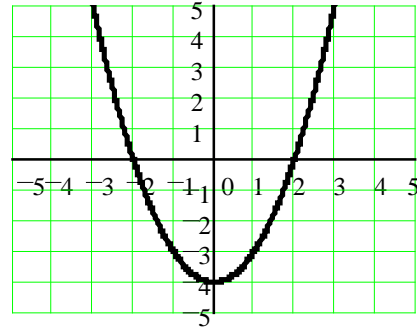
The Derivative as a Function (3.2)

Sketching a Derivative: Use the graph of $f(x)$ to sketch the graph of the derivative. State the critical values and identify the intervals

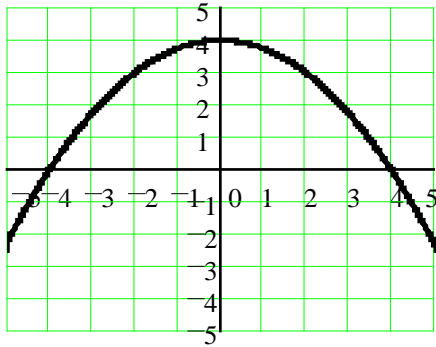
1.



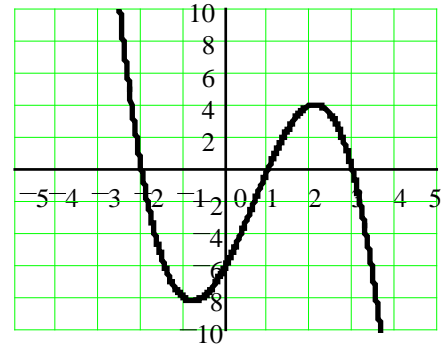
2.



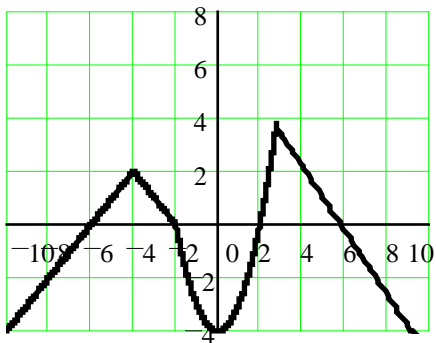
3.



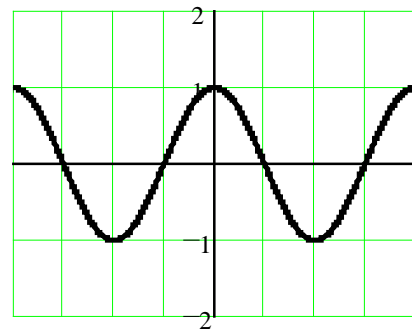
4.



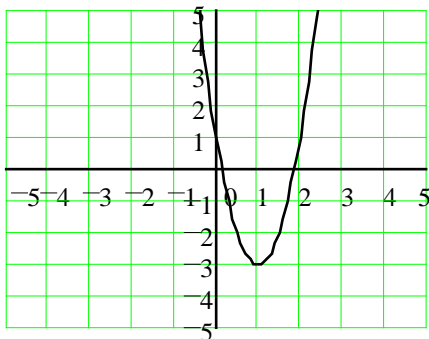
5.



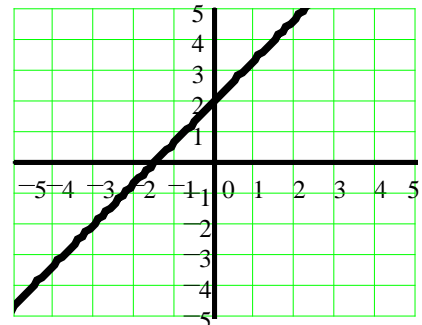
6.



7.

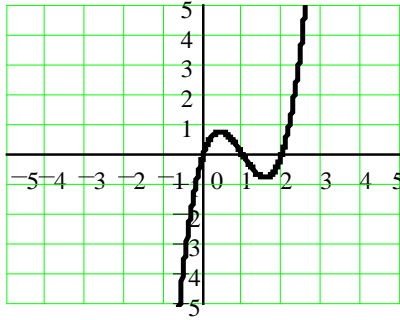


8.

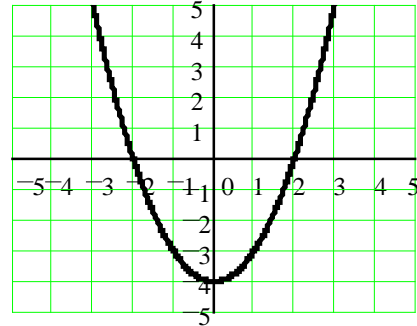


Sketching a Function: Use the graph of $f'(x)$ to sketch the graph of $f(x)$. Identify the critical values and the intervals on which the function is increasing/decreasing.

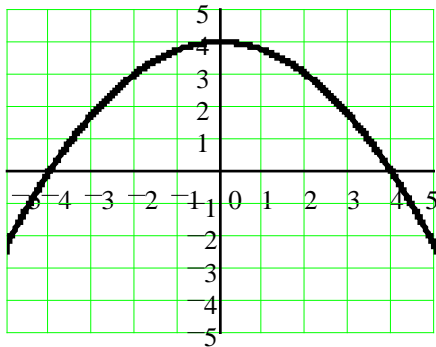
9.



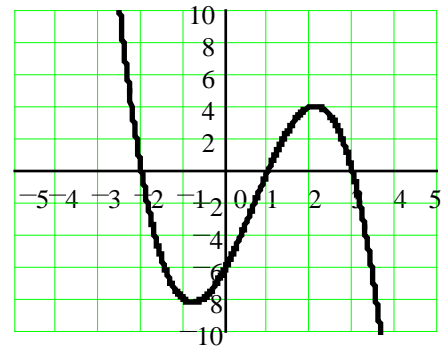
10.



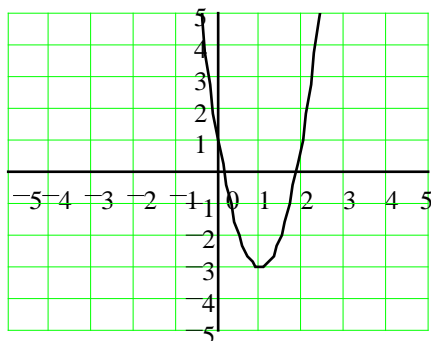
11.



12.



13.



14.

